



PLAZA 600

209,256 SF office space for lease

ICONIC SEATTLE

A stunning 20-story office tower in the center of the Denny Triangle

With exceptional view corridors from every floor, and with scenes of the skyline and Space Needle, Plaza 600 is one of the most sought after destinations in downtown Seattle.

600 Stewart Street | Seattle, WA 98101



ON-SITE PARKING

New improvements coming soon! Remodeled lobby, conference room, bike storage, lockers & showers



 FITWEL VIRAL RESPONSE CERTIFIED

 ON-SITE SECURITY

 BIKE STORAGE & SHOWERS

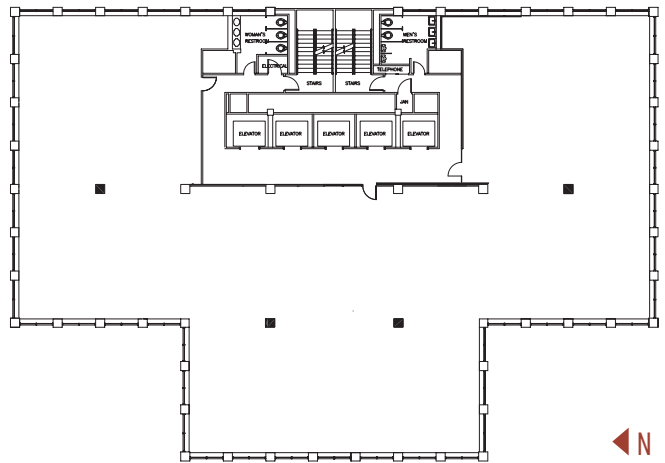
 PARKING RATIO 0.6/1,000 SF

 CONFERENCE FACILITY WITH KITCHEN



FLOOR PLAN

REPRESENTATIVE PLAN 11,359 SF



LOCATION

Plaza 600 is centrally located with frontage on Stewart Street, 6th Avenue, and Westlake Avenue, between Seattle's downtown retail core and South Lake Union neighborhood. Major employers in the area include Amazon HQ, Google, Nordstrom, and Facebook.

- 50+** 50+ apartment buildings within walking distance
- 100** Perfect walk score
- 60+** 60+ restaurants within 4 blocks
- 100** Perfect transit score



Suite 1700



Suite 2000



Cleita Harvey +1 206 607 1794 cleita.harvey@jll.com
 Tim Jones +1 206 971 7011 tim.jones@jll.com
 Lisa Stewart +1 206 607 1786 lisa.stewart@jll.com

